

N.E. 1/4
SECTION 33, T.7N., R.2W., S.L.B.&M.

IN WEBER COUNTY & PLAIN CITY

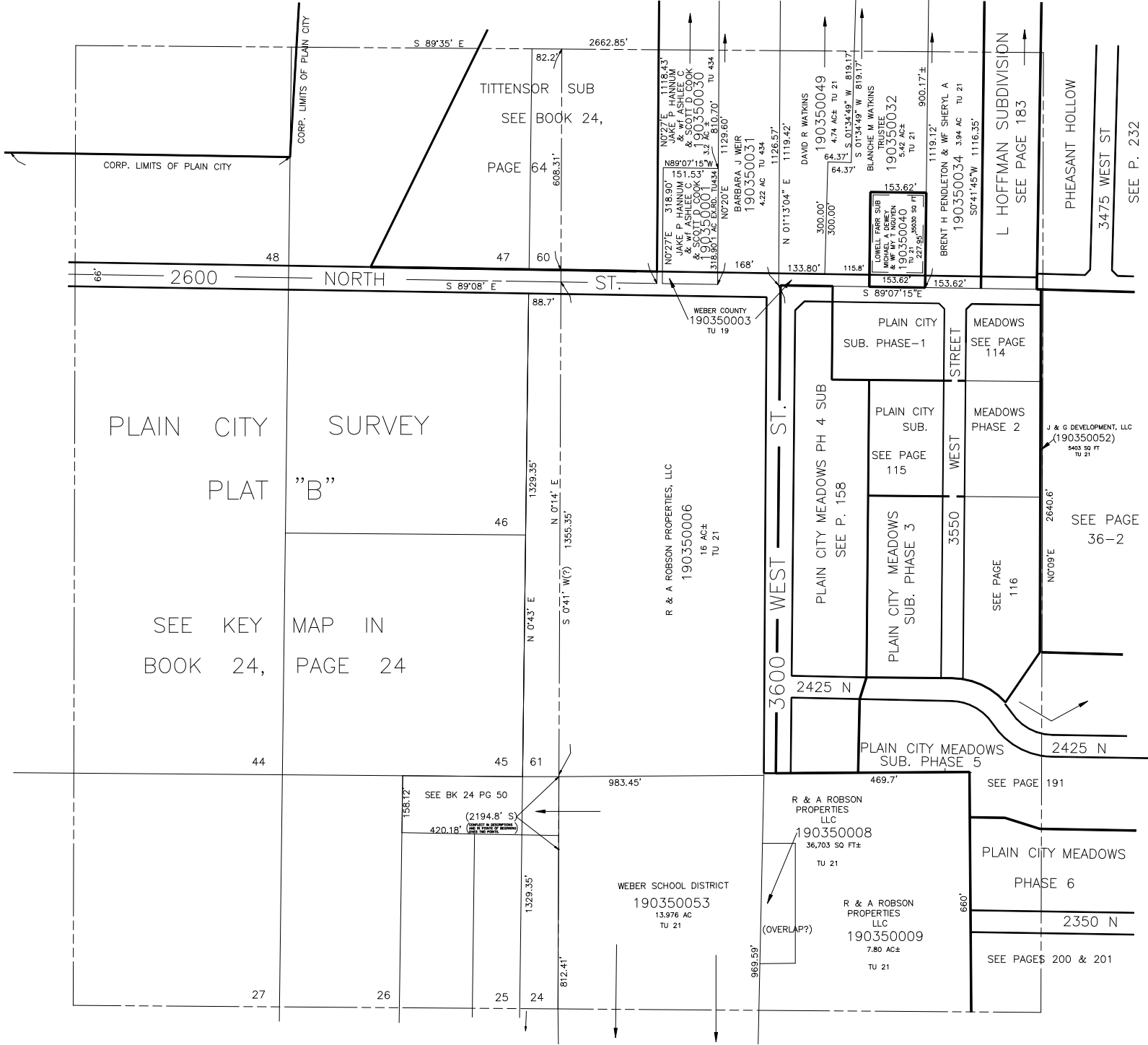
PREFIX:19-035

ALSO SEE PAGE 35-2

TAXING UNIT: 19, 21, 434

SCALE 1" = 200'

SEE PAGE 24



PLAIN CITY SURVEY
PLAT "B"

SEE KEY MAP IN
BOOK 24, PAGE 24